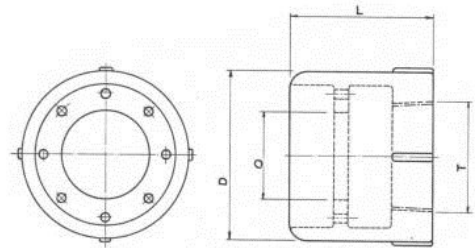


AN Retention Burner Nozzles

CAST IRON BURNER TIPS AN RETENTION BURNER NOZZLES

The AN tips are open type nozzles made of cast iron except the steel 15mm tip. These tips have excellent flame retention and high capacities at low gas pressures due to the large port area. All tips have correctly designed piloting retention holes arranged around the main port. Although AN burners are usually employed on low mixture pressures they have the ability to handle high drafts for greater capacities. They are generally used with the SPI inspirators for accurate control and are suitable for most commercially available gasses. If greater capacities with higher mixture pressures are required, the FR tips would be more appropriate. As they are open nozzles, adequate secondary air must be available around the tip to complete combustion



PART NUMBER	SIZE (BSPF)	TOTAL PORT AREA (mm ²)	DIMENSIONS (mm)			WEIGHT kg	APPROX FLAME LENGTH (mm)
			Length	Diameter	"O" Port		
AN15	15mm	152	33	27	12.6	.076	200
AN20	20mm	344	40	40	18.8	.175	250
AN25	25mm	504	44	49	23.6	.268	300
AN32	32mm	851	50	60	31.6	.458	350
AN40	40mm	1107	56	67	36.4	.660	400
AN50	50mm	1856	61	82	47.5	.900	500
AN65	65mm	3268	70	96	63.5	1.430	550
AN80	80mm	3995	80	113	70.4	2.100	700
AN100	100mm	5480	98	150	82.5	5.300	900

AN Retention Burner Nozzles

CAPACITY

Note: The capacity will vary greatly depending on many factors such as the gas type, gas pressure, air/gas mixture or the amount of draw available. The typical atmospheric furnace would have a minimal draw of approx. .01"wc.

PART NUMBER	CAPACITIES AT VARIOUS INDUCED DRAFTS (Pa/inches WC)					
	2.5/.01	12.5/.05	25/.1	50/.2	75/.3	100/.4
AN15	8	15	21	28	35	45
AN20	20	42	58	75	93	108
AN25	32	64	95	122	148	174
AN32	48	92	125	160	210	248
AN40	62	121	173	226	274	322
AN50	100	190	258	327	432	505
AN65	145	278	398	517	628	740
AN80	220	415	595	775	940	1100
AN100	305	575	815	1050	1300	1530

