

Hotplates—Heavy Acid Range

These Heavy Acid Range Hotplates are suitable for extremely corrosive environments. This range of hotplates covers a variety of sizes in cast iron and aluminium on request.

The hotplate bodies are constructed entirely from heavy gauge 316 stainless steel and element connections are fully sealed.

Single phase hotplates are supplied with a 10 amp or 15 amp heat control box of cast aluminium construction. This can be free standing on rubber supports or fixed to wall via mounting lugs.

Three phase hotplates are supplied with a robust switching unit housed in a powder coated heavy gauge steel box with glands fitted for three phase cables and a single phase cord to power the energy regulator and three pole relay.

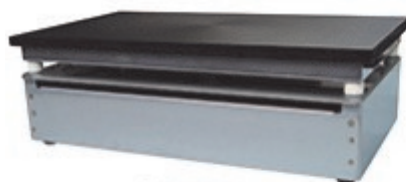
Teflon coated aluminium or austenitic iron hotplates are available in most sizes and digital PID control with removable temperature probe is an option on any hotplate.

Specials made to customer requirements.

Model No.	Size (cm)	Top Plate	Approx. Max. Temp.	Power Rating	Phase	Controller
202HA	20 cm Diam.	CAST IRON	480°C	1200W	1	HC 1
204HA	23 X 23	CAST IRON	400°C	1200W	1	HC 1
201HA	46 X 26	CAST IRON	375°C	2400W	1	HC 1
207HA	61 X 30	CAST IRON	385°C	3600W	1	HC 15
206HA	61 X 50	CAST IRON	450°C	7200W	3	206SWU
208HA	20 X 20	CAST IRON	450°C	1200W	1	HC 1
209HA	30 X 30	CAST IRON	400°C	2400W	1	HC 1
210HA	46 X 30	CAST IRON	350°C	2400W	1	HC 1

** NO 3 PHASE CABLE SUPPLIED WITH 206 HOT PLATE OR SWITCHING UNIT CONTROL UNITS

Model	Power Rating (Max.)	Phase	Current (Max.)
HC1	2400W	1	LO AMP
HC15	3600W	1	15 AMP
206SWU	3 X 2400W	3	3 X 10AMP



201HA



207HA



206HA