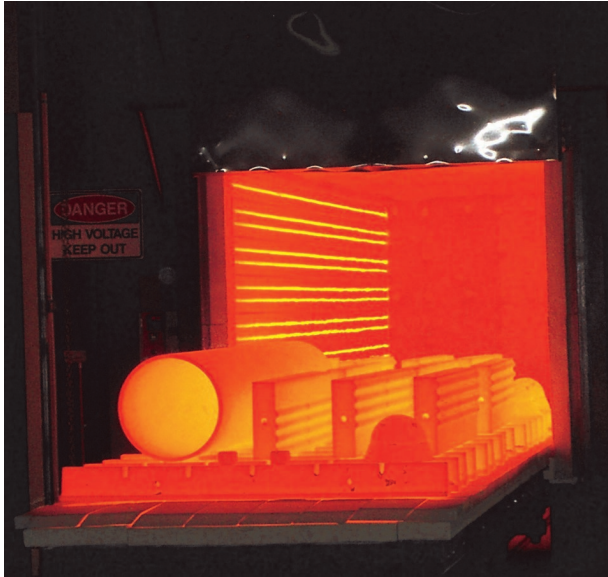


Bogie Furnace Range



Furnace Technologies manufactures a wide range of bogie hearth furnaces which are suitable for the heat treatment of large loads.

These furnaces are designed to operate up to 1300°C and can be made to heat using gas, oil or electrical elements.

When choosing a system which is right for your operation we can assist by recommending the best configuration for your specific applications, site details and projected needs.

Key Features;

- Fully automatic load and unload features
- Automatic quench systems
- Time from unload to quench less than 30 seconds for a 10 ton load
- The furnace can be operated with multiple bogies
- The bogie hearth is constructed from high strength refractory
- The heat resistant steel T-racks support a wide range of loads
- Sealing of the arc motion vertical doors and bogie is guaranteed due to its revolutionary design
- The integrated control system includes programmable temperature control and independent over-temperature control and independent over-temperature protection
- Temperature recorders with connections for trailing thermocouples
- Systems can be continuously monitored.

