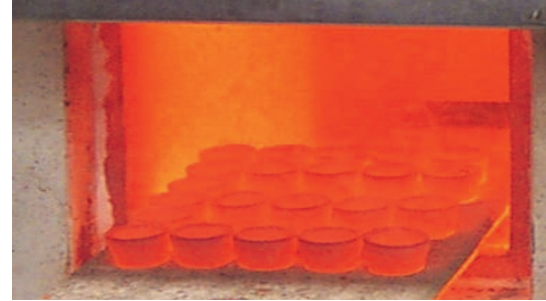


Electric Cupellation Furnace

- Variable speed control on preheated air flow into the cupellation chamber.
- S/S Damper control and Litharge trap
(recommend vent velocity of +2m/s , does not dispense the need for HVAC)
- Flexible S/S 80mm connection to your extraction system.
- Square ventilation with excellent air flow across all cuples in the muffle.



- Cooling fume cabinets feed into the extraction system with their own damper control.
- Doors manual or automatic. (See options)
- Double muffle furnace Available (See options)
- Stand alone installation. The units are made complete within a stand.
- Muffles are fitted with two(2) thermocouple entries.



Twin Muffle shown

General Specifications:

Maximum Temperature	1400c max , 1350c Continuous.
• Insulation	1400c 6mm fibre JM26 Bricks and back up 200mm thick.
• Muffle	Silicone Carbide muffle
• Elements	Silicon Carbide
• Thermocouple	Type R
• Power Control	SCR Phase angle control
• Temperature Control	Reach PID Digital control (can be computer linked for operation and data logging) RS485
• Over temperature protection	Stand alone control and back up system to protect the element chamber.
• Construction	5 mm angle iron frame PGI Sheets.
• Door	S/S light weight operated via counter lever or automatic door.

Specifications may change

Models Cupel Chamber H x W x D

CFSIC30 30place 150 x 230 x 380 mm 11.8Kw
CFSIC60 60Place 198 x 280 x 460 mm 15.4Kw

Variations

Automatic doors, Data logging RS485 Comms, Double muffles (two furnaces combined as one) Thermocouple R or K type others available for higher temperature ranges.